

NOVEMBER 2017 TOP 50 ROOMS

AUSTRALIAN

MY IDEAL HOUSE TAKES SHAPE!

HOUSE & GARDEN

100%
AUSTRALIAN
HOMES

Plus
EXCITING
IDEAS FOR
NEW BUILDS

TOP 50 ROOMS

Take inspiration from Australia's loveliest homes

MATERIAL
MATTERS
BOLD NEW
DIRECTIONS
FOR INSIDE
& OUT

SLEEP, PLAY
& DREAM
ROOMS
KIDS LOVE!

*Life is
beautiful*
A peony farm
in bloom



where inspiration lives AUSTRALIAN HOUSE & GARDEN

TAKING SHAPE

A tricky block was never going to hold this Melbourne family back. Their architect delivered just what they wanted and a whole lot more.

STORY Jackie Brygel | STYLING Ruth Welsby | PHOTOGRAPHY Martina Gemmola



DINING The large triangles in the artwork by Louise de Weger were the starting point for the room's colour scheme. Blue plant pot, Rachael Swift Design. Smart buy: Twiggygalerie cubes, \$65. Sage x Clure. **FRONT GARDEN** Behind the curved, rendered wall is a lawn for Nathan and Simone's two daughters, Ava Marie (left) and Harper. The front door and cladding are American oak stained with Feast Watson Black Japona. Up above, the bedroom windows are angled to catch the sun. ▶



For Simone Stainwall and Nathan Theos, the past five years have been a whirlwind of the best kind. In that time, they met and fell in love, started a family, snapped up a prime parcel of land in a bayside suburb of Melbourne and built their dream home. Suffice to say, the busy couple are now cherishing every family moment in their newly completed house and delighting in its clever design.

"We bought the land in December 2013 after it was passed in at auction," says Nathan. "I went and made an offer and we got it." Shortly afterwards, Simone, a lawyer, and Nathan, a director at a building company, went to an open house that architect Martin Friedrich had designed and loved it. "As soon as we walked in, we thought, 'Wow! That's exactly the vision we have for our own house,'" Nathan explains. Martin was hired.

Though it's in a great location close to schools, the beach and a shopping strip, the 427m² block is an unusual shape that narrows towards the back. The challenge for Martin was designing an expansive family home on it. "We wanted to maximise space and light, so there are large areas of well-oriented glazing," he says. "We also

THE PALETTE

Dulux
Whisper White
exterior and interior
throughout

Nero Maquina
island bench

Polished
concrete
flooring

KITCHEN White semi-gloss cabinetry rises to the ceiling while black in the appliances, furniture and island bench's stunning Nero Maquina marble rules at ground level. Peeking through the clear-glass splashback is *Bambusa textilis* 'Gracilis' supplemented by lots of green in the plants and foliage throughout. Appliances, Miele. **Smart buy:** 'Velletri' wire stools, \$349 each, Huset. **ENTRANCE** Harper with Bentley, the family's six-year-old cavoodle. The curved staircase is one of Martin Friedrich's signature designs. Polished concrete floor, Mentone Premix.



Photo subject is reproduced as accurately as printing processes allow.

This is the life

After two years of planning and building while moving between their in-laws, Simone and Nathan are enjoying a bit more relaxation – and finally being able to stay home. "We have families with similar-age children here a lot so the kids can have free rein," Simone says. "Our house isn't particularly large, but it feels so much roomier than we imagined because of the high ceilings and natural light. It's great for entertaining."

Building basics

Simone and Nathan both work in the building industry so they understood the process and knew that finding the right people to work with that was crucial. "Martin Friedrich is passionate about design," says Simone of their architect. "He was involved in everything, even choosing door handles. He did much more than he had to. We felt we were in really good hands. Also, our builder Matt is a perfectionist – we loved him."

LIVING Below and inset "We have quite a minimalist style," says Nathan. To keep things out of sight, there's custom-built storage on most of the long wall. The Calligaris 'Tarsio' extension table and 'Duffy' chairs are from Voyager Interiors. Tom Dixon pendant lights. 'Strand' sofa, Plush. Pink ottoman, Jordan. 'Big Log' table and 'Eggcup' stool, Mark Tuckey. Pink throw, St Albans. Rug, Halcyon Lake. Artwork in kitchen by Kerry Armstrong. **Designer buy:** Bone inlay hexagon tray, \$420, Fenton & Fenton.

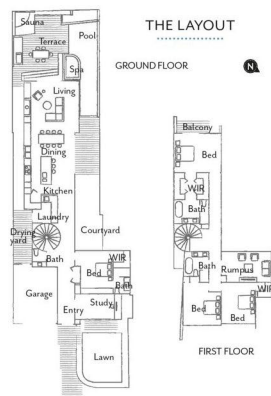
included a number of outdoor entertaining areas and lush gardens around the house, all designed by COS."

Inside, the sculptural staircase makes a great first impression. As you progress along the hall, the shimmering lap pool is revealed, wrapped around a corner of the living space. There are polished concrete floors, airy open-plan zones and an abundance of concealed storage. The couple love contemporary art so Martin created plenty of wall space for their vibrant collection.

Much of the interior design and styling is by Simone, who surprised herself by really enjoying the process. "With small children [Harper, now four, and one-year-old Ava-Mariel], I had to be practical when it came to choosing finishes, but at the same time it was important to go with things we love," she says.

"I'm very proud of what Simone's done," says Nathan. "But that's not to say we agreed on everything! The hardest thing was trying to bed down the stone and tile selections for the bathrooms – expensive to change if you get that wrong. We're finished now, but still pinching ourselves as we think back on everything that's happened."

Martin Friedrich Architects, St Kilda, Victoria:
(03) 9380 7709 or mf-arch.com.au. **Builder Matt Trihey at 1186 P/L,** matt@1186.com.au. **COS Design landscaping,** (03) 9889 3329 or cosdesign.com.au.



FEATURE TREES & PLANTS

Acer palmatum 'Senkaki'
Pyrus calleryana 'Capital' (behind pool wall)
Liriope muscari
Lomandra 'Taniika'
Buxus sempervirens
 Blue bamboo (*Drepanostachyum 'falcatum'*)

POOL TERRACE Glass fencing keeps the pool area seamless and safe. The star of the space is the black mosaic-tiled spa, with the rear sofa a close second. Bluestone paving with terrazzo steps, table and integrated bench. 'Velleri' chairs, Husat. Cushions, Southwood. **MAIN BEDROOM** opposite top and below left Ava-Marie and Harper in their parents' room. Linen, throw and cushions, Adairs. Bedside table, Keeki. Engineered timber boards, Royal Oak Flooring. Floor cushion, Fenton & Fenton. Artwork by Michael Bond. **Smart buy:** 'Snuggle' swivel chair, \$1799, Plush. **ENSUITE** The grey oyster marble vanity and tall mirrors are beautiful features. Ajaire bath and basin. 'Diamond' towels, Ninno. **For Where to Buy, see page 230. H&G**